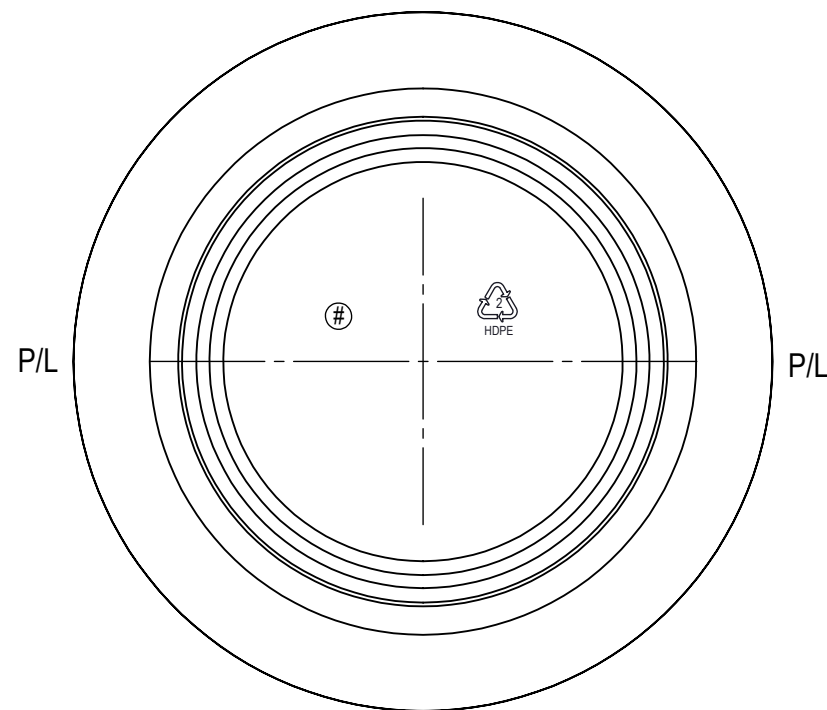
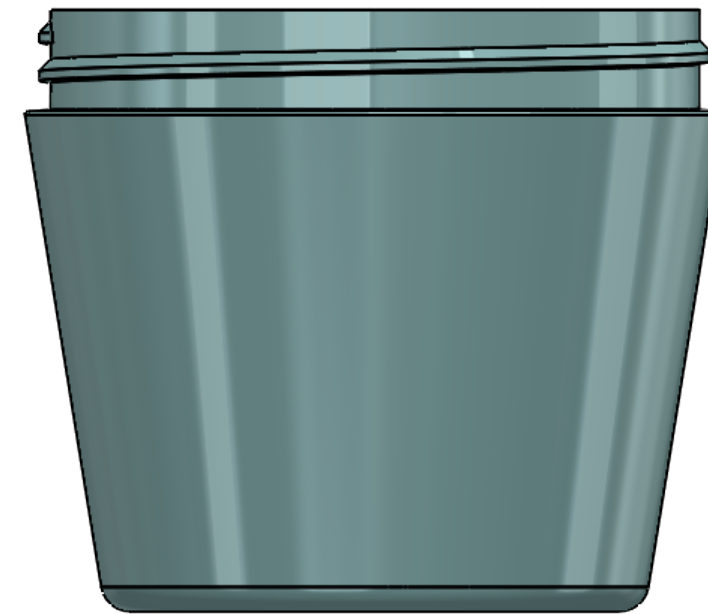
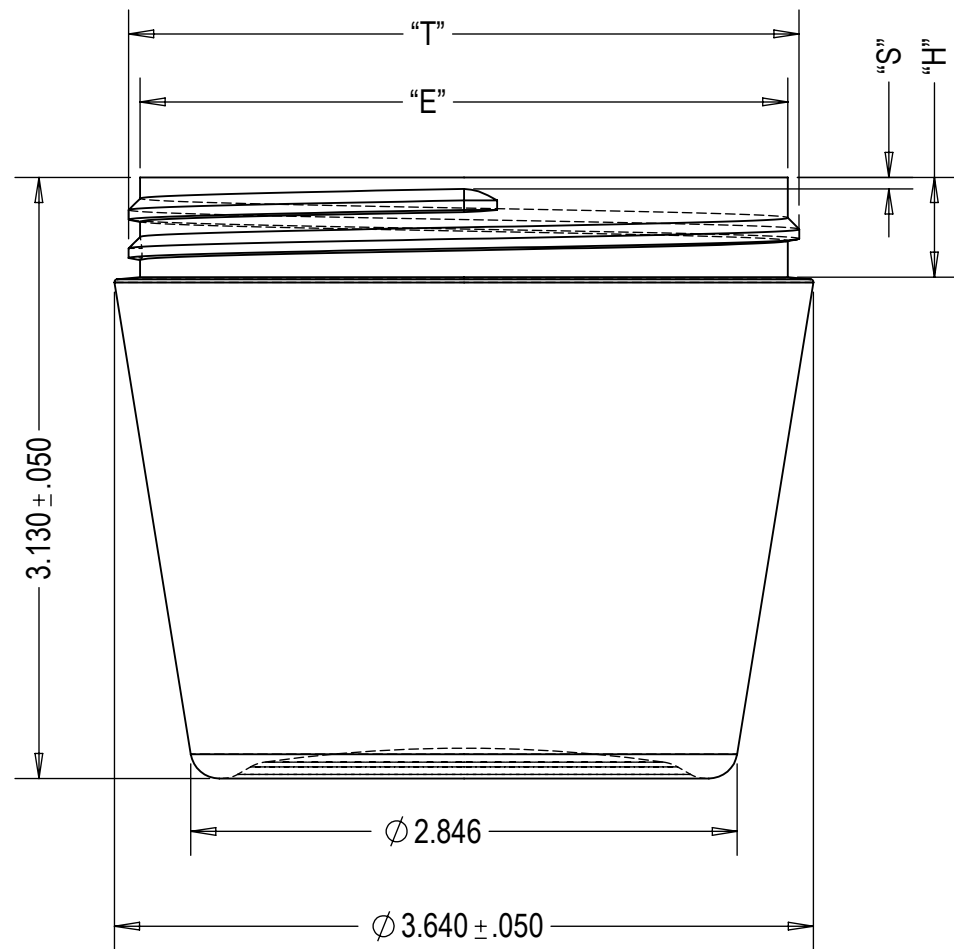


NO.	REV. BY	DESCRIPTION	DATE



BOTTLE SPECIFICATIONS			
MATERIAL: HDPE	FILL CAPACITY: 296 ML $\pm$ 13ML		
WEIGHT: 24g $\pm$ 2g	O/F CAPACITY: 396 ML $\pm$ 13ML		
NECK SPECIFICATIONS			
FINISH	89MM SPECIAL	"A" DIM.	N/A
STYLE	M	"B" DIM.	N/A
"T" DIM.	$\phi 3.494 \pm .017$	HELIX ANG.	N/A
"E" DIM.	$\phi 3.374 \pm .017$	T.P.I	5
"I" DIM.	N/A	PITCH	.200
"D" DIA.	N/A	CUTTER DIA.	.500
"H" DIM.	.530 $\pm$ .015	THREAD TURNS	1.25
"S" DIM.	.060 $\pm$ .015		



DWN. BY: A.P	DATE: 01/08/19	DESCRIPTION: 10 OZ HAND CREAM JAR
APR. BY:	DATE:	DRAWING NO.:
SCALE: 1:1		