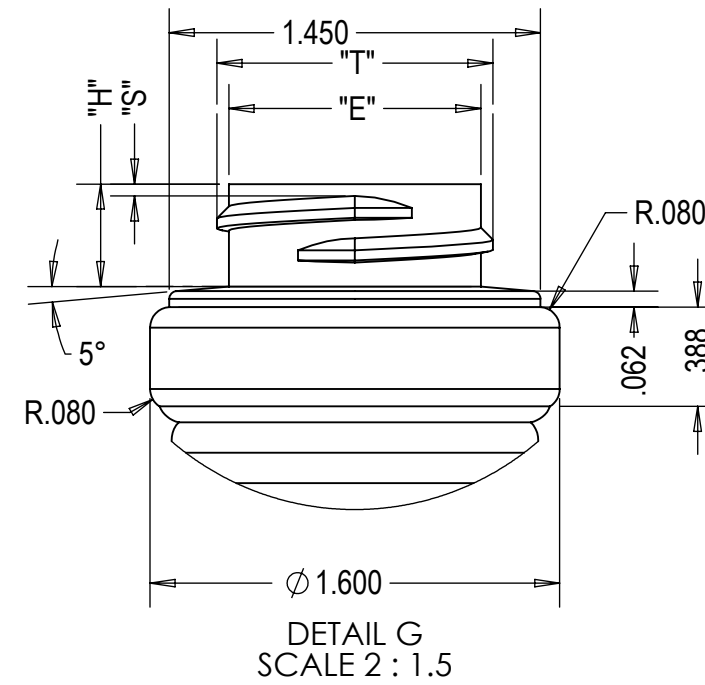
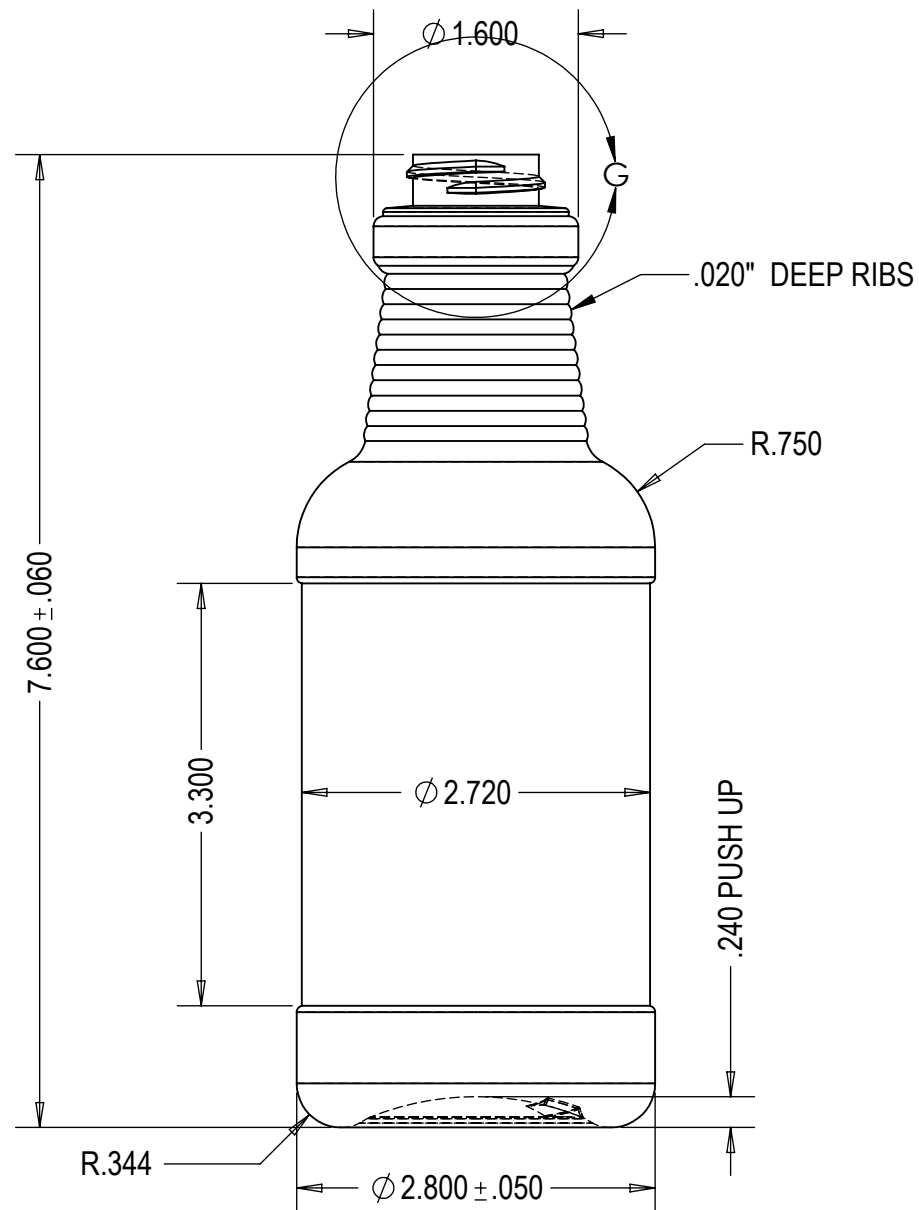
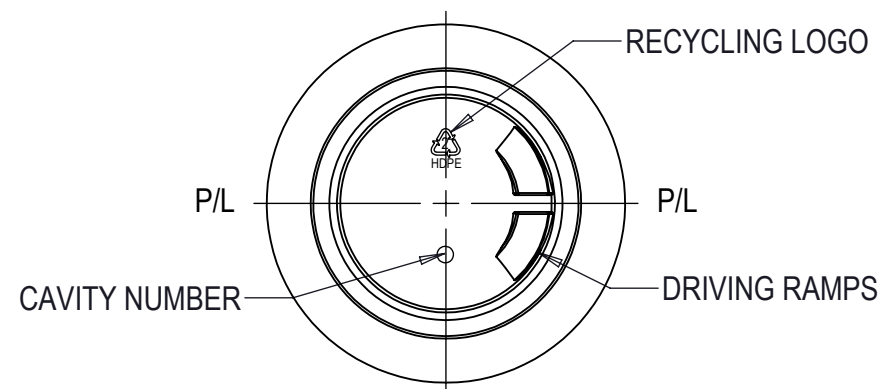


NO.	REV. BY	DESCRIPTION	DATE



NOTE;

- ALL DIMENSIONS ARE TO BE IN INCHES UNLESS SPECIFIED.
- ALL RADS & FILLETS ARE 1/64 R. MIN. UNLESS OTHERWISE SPECIFIED.
- ALL DIMENSION & FILL CAPACITIES CONFORM TO S.P.I. STANDARDS.



- BODY SIZES SHOWN ARE REPRESENTATIVE OF MEAN DIMENSIONS ONLY. FINAL PRODUCT SIZES ARE TO BE DETERMINED FROM ACTUAL PLASTIC SAMPLES.
- ALL DIMENSIONS AND TOLERANCES CONFORM TO S.P.I. STANDARDS WHERE APPLICABLE.
- THIS DRAWING MAY NOT BE REPRODUCED IN ANY FORM, FOR ANY PURPOSE, UNLESS WRITTEN CONSENT IS GIVEN BY BLOW MOULD ENGINEERING.
- BLOW MOULD ENGINEERING WILL NOT BE RESPONSIBLE FOR THE FUNCTIONALITY OF THE PART. ALL DRAWINGS MUST BE APPROVED BY THE CUSTOMER BEFORE PRODUCTION OF THE MOULD BEGINS.

BOTTLE SPECIFICATIONS			
MATERIAL: HDPE	FILL CAPACITY: 473 ML \pm 11ML		
WEIGHT: 32 g \pm 2.5g	O/F CAPACITY: 515 ML \pm 11ML		
NECK SPECIFICATIONS			
FINISH	28-400	"L" DIM.	N/A
STYLE	M	"W" DIM.	N/A
"T" DIM.	$\phi 1.078 \pm .010$	HELIX ANG.	2°34'
"E" DIM.	$\phi .984 \pm .010$	T.P.I	6
"I" DIM.	N/A	PINCH	.167
BEAD DIA.	N/A	CUTTER DIA.	.375
"H" DIM.	.400 \pm .015	THREAD TURNS	1
"S" DIM.	.046 \pm .015		
BLOW MOULD ENGINEERING			
DWN. BY: A.P	DATE: 01/24/18	DESCRIPTION:	16 OZ CARAFE
APR. BY:	DATE:	DRAWING NO.:	C93-4228-1-1A
SCALE: 1:1.5			