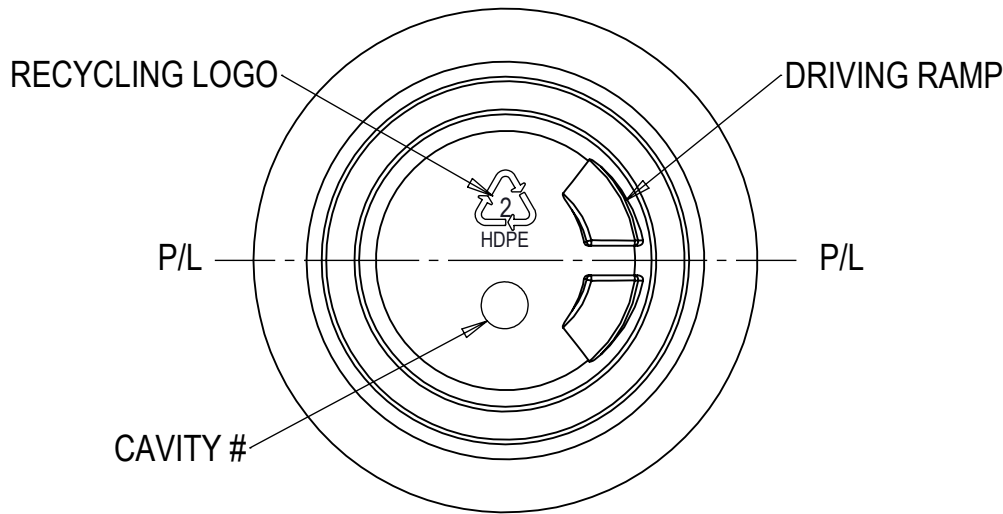
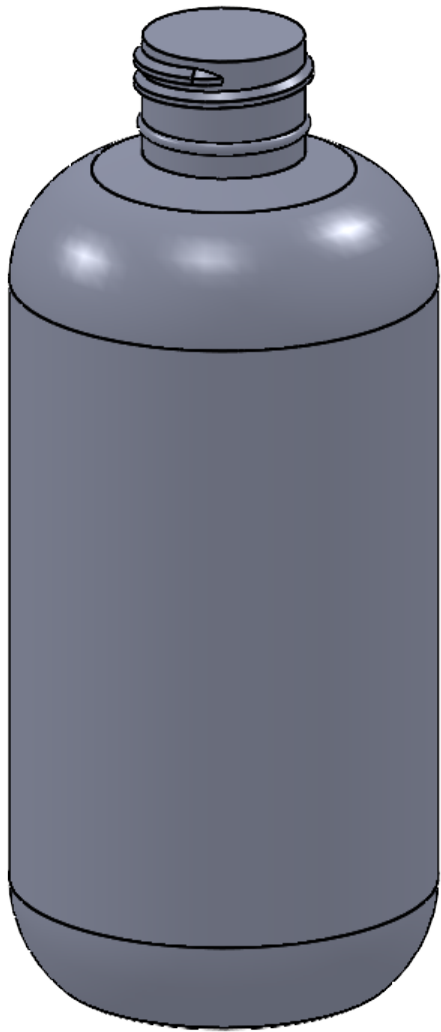
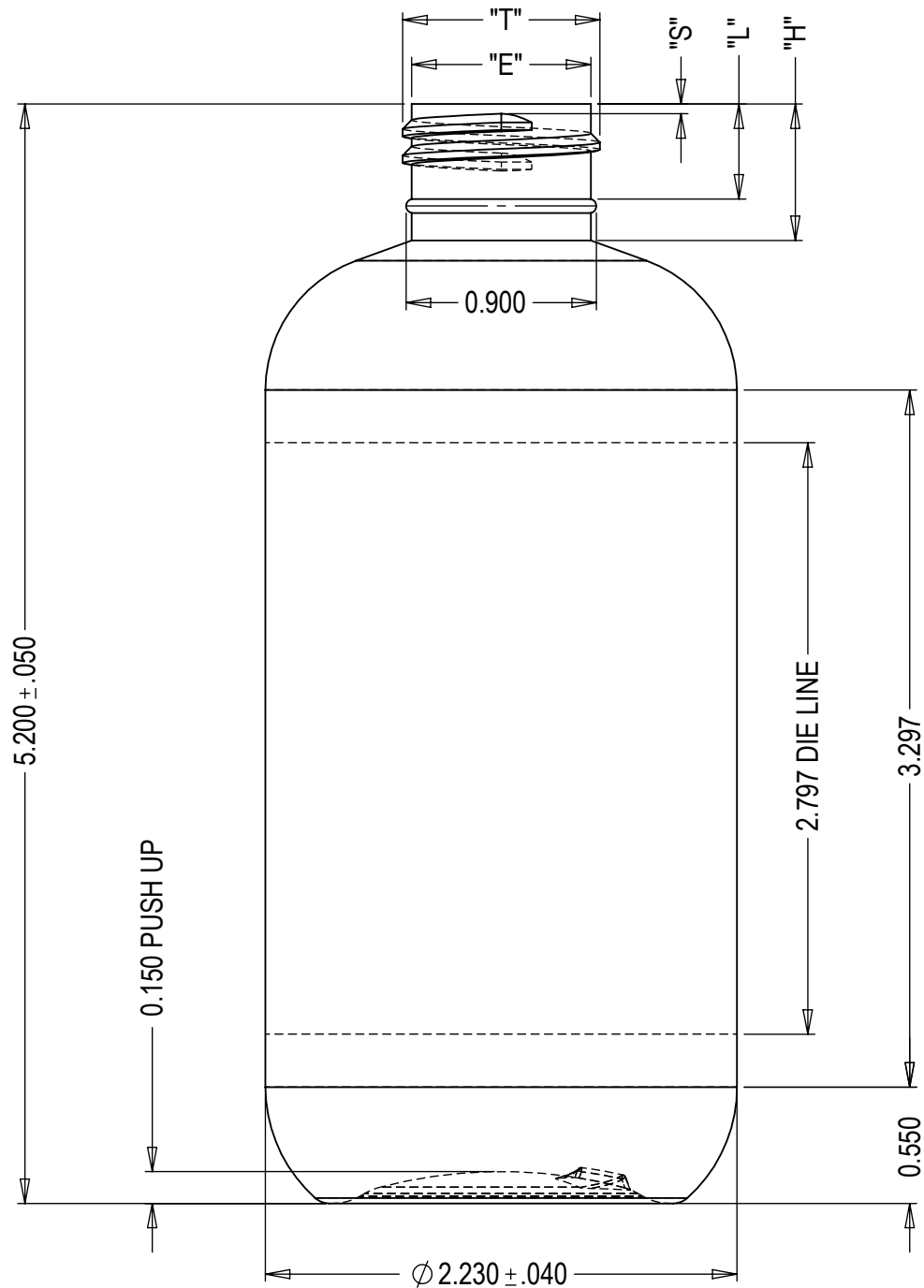


NO.	REV. BY	DESCRIPTION	DATE
△			



NOTE;

-- ALL DIMENSIONS ARE TO BE IN INCHES UNLESS SPECIFIED.

-- ALL RADS & FILLETS ARE 1/64 R. MIN. UNLESS OTHERWISE SPECIFIED.

-- ALL DIMENSION & FILL CAPACITIES CONFORM TO S.P.I. STANDARDS.

--NECK DETAIL WILL BE PROVIDED BY CUSTOMER.

BOTTLE SPECIFICATIONS			
MATERIAL: HDPE		FILL CAPACITY: 236 ML ± 7ML	
WEIGHT: 19g±2g		O/F CAPACITY: 257 ML ±7ML	
NECK SPECIFICATIONS			
FINISH	24-410	"L" DIM.	.450
STYLE	M	"W" DIM.	N/A
"T" DIM.	Ø .932 ± .008	HELIX ANG.	2 °13'
"E" DIM.	Ø .848 ± .008	T.P.I	8
"I" DIM.	N/A	PINCH	.125
BEAD DIA.	N/A	CUTTER DIA.	.500
"H" DIM.	.646 ± .015	THREAD TURNS	1.5
"S" DIM.	.046 ± .015		
BLOW MOULD ENGINEERING			
DWN. BY: A.P	DATE: 30 MAY 2025	DESCRIPTION: 8 OZ BOSTON ROUND	
APR. BY:	DATE:	DRAWING NO.: 1A	
SCALE: 1:1			

- BODY SIZES SHOWN ARE REPRESENTATIVE OF MEAN DIMENSIONS ONLY. FINAL PRODUCT SIZES ARE TO BE DETERMINED FROM ACTUAL PLASTIC SAMPLES.
- ALL DIMENSIONS AND TOLERANCES CONFORM TO S.P.I. STANDARDS WHERE APPLICABLE.
- THIS DRAWING MAY NOT BE REPRODUCED IN ANY FORM, FOR ANY PURPOSE, UNLESS WRITTEN CONSENT IS GIVEN BY BLOW MOULD ENGINEERING.
- BLOW MOULD ENGINEERING WILL NOT BE RESPONSIBLE FOR THE FUNCTIONALITY OF THE PART. ALL DRAWINGS MUST BE APPROVED BY THE CUSTOMER BEFORE PRODUCTION OF THE MOULD BEGINS.